



Serranía de Ronda

Practical guide area/Map

01 A journey through time and culture



Arab Baths of Ronda

Located in the **westernmost part of the province of Málaga**, this region has been a **crossroads since ancient times**. Discover the remains of the first settlers in the **Cueva de la Pileta de Benaoján**. Contemplate the legacy of **Roman culture** at the **Acinipo Archaeological Site**. Travel through the territory discovering monumental jewels such as the **Arab Baths of Ronda** and the **castles of Benadaliid and Gaucín**, not forgetting the **palaces, baroque churches and their fountains and wash houses**. Scenery that captivated romantic travellers and universal figures such as **Ernest Hemingway, Orson Welles and Rainer M. Rilke**, attracted by the legends of bandits.

02 Wines, Iberian meats and chestnuts



Wine Route

The area has magnificent wines protected by the **DO Wines of Sierra de Málaga**, which are the protagonists of the **Wine and Winery Route of the Serranía de Ronda**. Visitors can stroll through the vineyards or take part in wine tastings and also enjoy typical local dishes such as beans with black pudding or gazpacho a la serrana. **The Genal Valley chestnut** is a first class product that even has its own celebration: the **Festival de la Castaña or Tostón**, which takes place in **Pujerra**.

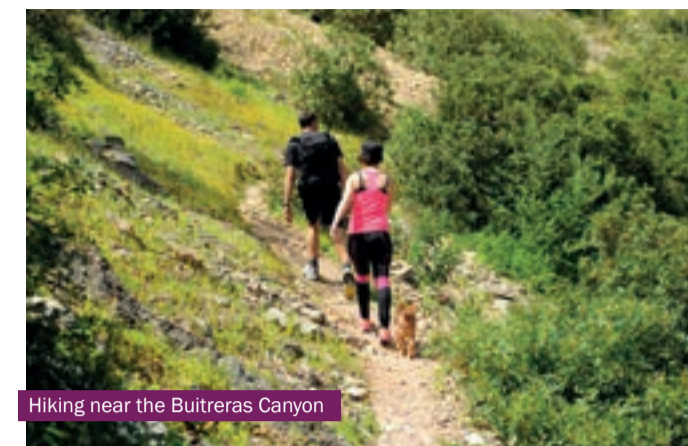
03 From Goyesca to Saddlery: tradition and customs



Goyesque bullfight

The region is replete with traditions and customs that have given it its personality. In particular, the **bullfighting tradition** in Ronda, birthplace of one of the fathers of modern bullfighting, Pedro Romero. In his honour, the city celebrates the **Fair and Festivities** that bear his name, culminating in the famous **Corrida Goyesca**. Also of note are **trades** including forging, furniture-making, ceramics, cork and saddlery; and other **celebrations** such as the **Moors and Christians Festival in Benadaliid** (of Regional Tourist Interest), **Easter Week in Ronda**, the **Water Festival in Jimera de Líbar** and the **re-enactment of the Taking of Gaucín**.

04 Actively enjoying the Serranía



Hiking near the Buitreras Canyon

Active tourism companies have endless possibilities for the organisation of outdoor activities in the region. The Guadiaro river is ideal for **water sports**: canoeing, between the stations of Benaoján and Cortes, and **canyoning in the Cañón de las Buitreras** or the **Sima del Diablo in Júzcar**. The mountain ranges along the river attract climbing and via ferrata enthusiasts. Lovers of **hiking and cycling** can enjoy the **Gran Senda de la Serranía de Ronda (GR-141)** and the **Gran Senda de Málaga**. And for the more daring there is the **Hundidero crossing**, the most spectacular cave in the mountain range open to visitors.



Serranía de Ronda



Copper Forest

Discover extra content. Scan the code!



8 426463 002764



www.andalucia.org



Oficina de Turismo de Ronda
Paseo Blas Infante, s/n
29400 Ronda, Málaga
Tel.: 952 169 311 / 600 140 686 / 600 140 687
Correo e.: tronda@andalucia.org



Oficina Municipal de Turismo de Ronda
Tel. 952 187 119
Correo e.: informacion@turismoderonda.es
www.turismoderonda.es



JUNTA DE ANDALUCÍA
Consejería de Turismo, Regeneración,
Justicia y Administración Local
Empresa Pública para la Gestión
del Turismo y del Deporte de Andalucía, S. A.
C/ Compañía, 40.
29008 Málaga
www.andalucia.org

05 Unique landscapes and ecosystems

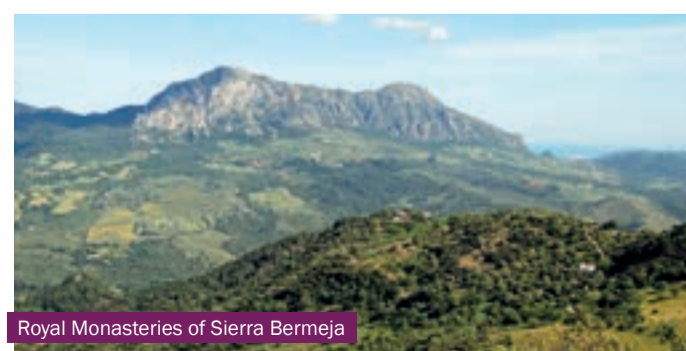
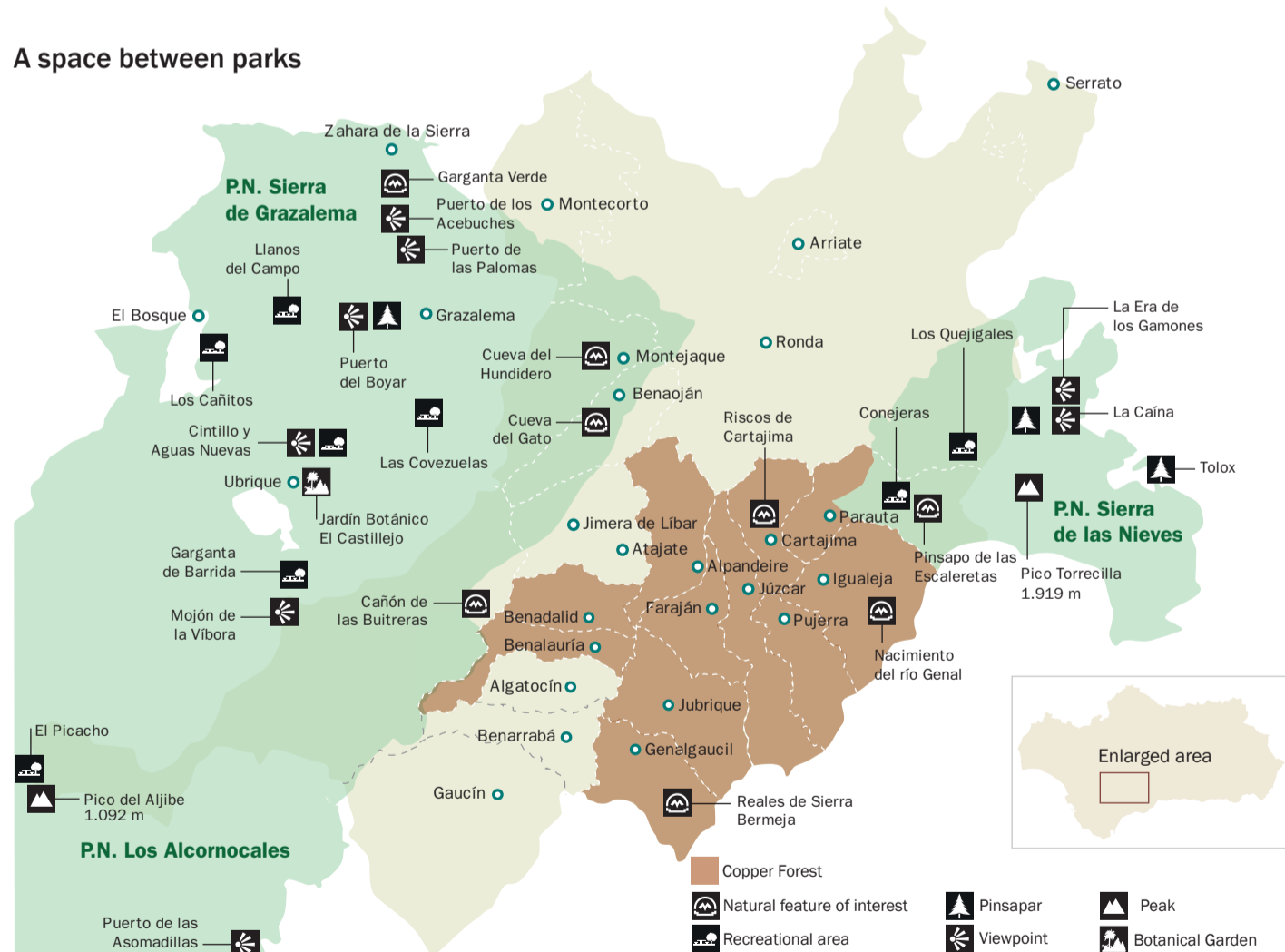


Los Alcornocales Natural Park

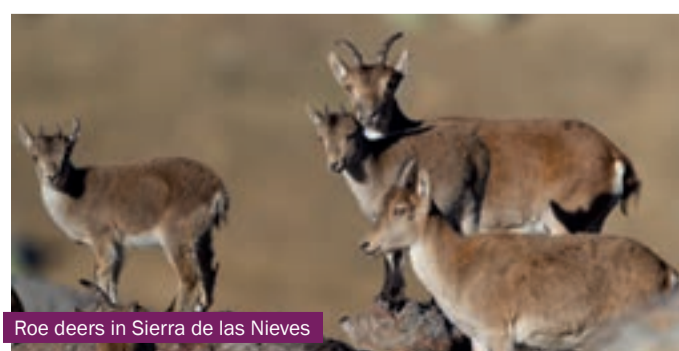
The number of **unique landscapes** is one of the great attractions of this region: steep slopes, ravines, rocky areas... The **Genal valley**, carpeted with dense forests of chestnut and cork oak trees, is painted yellow and ochre in autumn in a **fascinating visual spectacle** known as the **Copper Forest**.

In addition, the **Serranía de Ronda** has **natural areas of exceptional environmental value** such as the Sierra de las Nieves National Park, the **Sierra de Grazalema** and **Los Alcornocales natural parks**, the Paraje Natural los **Reales de Sierra Bermeja** and **six natural monuments**. These are home to natural gems including the **Spanish fir**, the golden eagle and the griffon vulture. They also provide the perfect setting for all kinds of **outdoor activities**, from canyoning to bird watching.

A space between parks



Royal Monasteries of Sierra Bermeja



Roe deers in Sierra de las Nieves

06 The Sierra de las Nieves National Park



Spanish fir forest

The **Sierra de las Nieves National Park** covers more than **23 000 hectares** and flanks the Serranía de Ronda from its easternmost part, entering districts including **Ronda** and **Parauta**. Declared a **World Biosphere Reserve by UNESCO** and a **Special Area of Conservation for Birds**, its exceptional **geological and scenic value** is complemented by the variety of ecosystems that are home to species such as the **Spanish fir**, an endemic fir tree found nowhere else in the world.

There are also **birds** such as the golden eagle, peregrine falcon and eagle owl; **mammals** such as roe deer, wild boar, mouflon, fallow deer, otter, marten and wild cat; **fish and amphibians** such as the tritillary fish and crayfish; seven endangered species of **bats** such as the giant cockatoo, the largest European bat to live in tree cavities; and a large group of **butterflies and dragonflies**.



Discover extra content. Scan the code!



A journey through time and culture

ARCHAEOLOGICAL SITES

- 1 Cave of La Pileta. Benaolán
- 2 The Stone House. Cortes de la Frontera
- 3 Acinipo Archaeological Site. Ronda
- 4 Archaeological Site of the Arab Baths of Ronda
- 5 Cave Hermitage of the Virgen de la Cabeza. Ronda

MONUMENTS

- 6 Church of San Antonio de Padua. Alpendeire
- 7 Moorish castle. Benadaliid
- 8 Virgen del Rosario Tower. Benalauría
- 9 Eagle Castle. Gaucín
- 10 House of the Moorish King. Ronda
- 11 Casa Nazarí del Gigante. Ronda
- 12 Church of Santa María la Mayor. Ronda
- 13 City walls and Islamic gates. Ronda

MUSEUMS AND INTERPRETATION CENTRES

- 14 Fray Leopoldo's Birthplace. Alpendeire
- 15 Fernando Centeno Museum of Contemporary Art. Genalguacil
- 16 House Museum of San Juan Bosco. Ronda
- 17 Casa Palacio Museo Lara. Ronda
- 18 New Bridge Interpretation Centre. Ronda
- 19 Permanent Collection Unicaja Museum Joaquín Peinado. Ronda
- 20 Museum of Ronda-Palacio de Mondragón. Ronda



Eagle Castle (Gaucín)

Wines, Iberian meats and chestnuts

WINE AND OLIVE OIL TOURISM

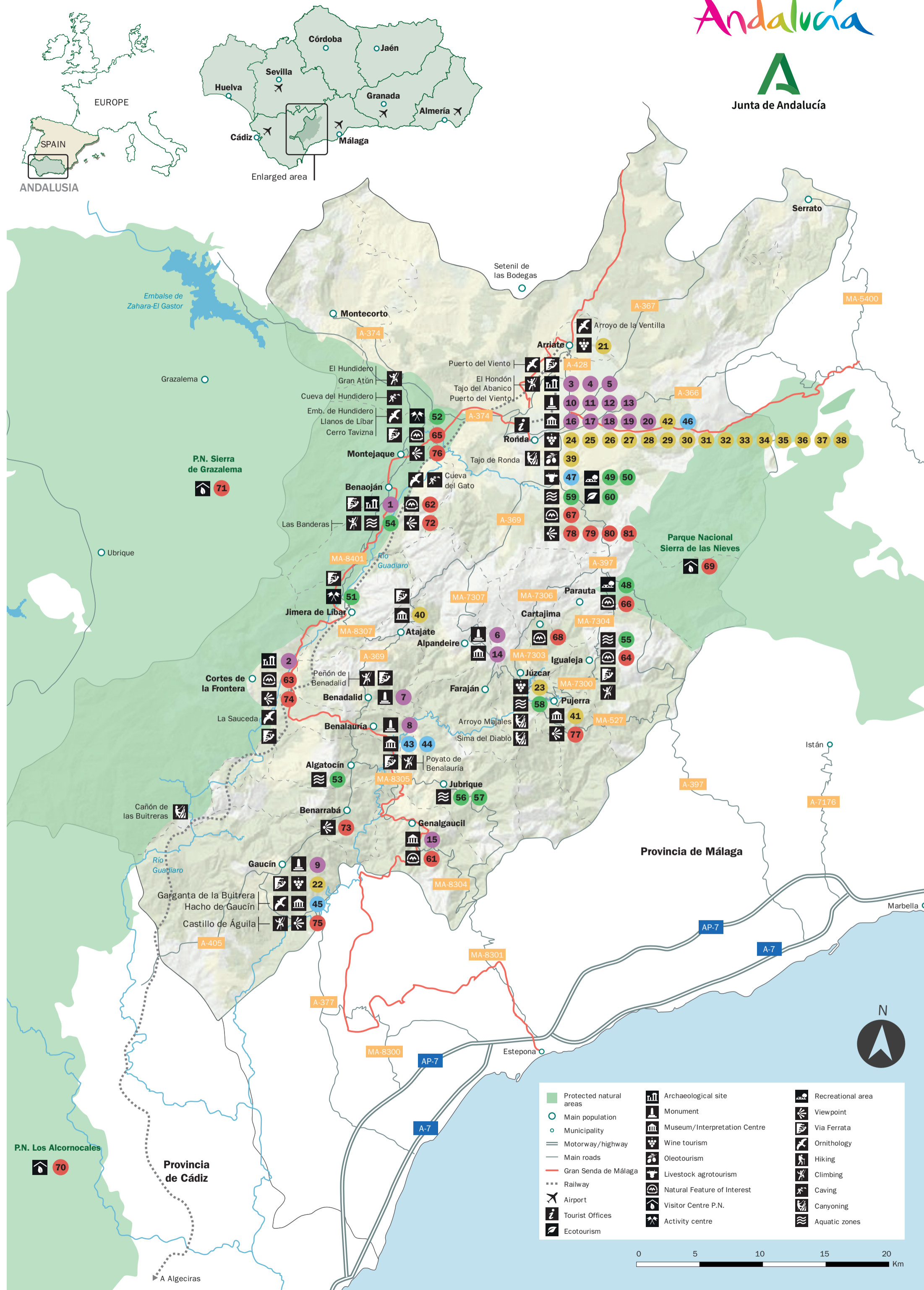
- 21 Vetas Winery. Arriate
- 22 César Vineyards and Winery. Gaucín
- 23 Bodega Antigua Real Fábrica de Hojalata San Miguel. Júzcar
- 24 Conrad Winery. Ronda
- 25 Cuesta de la Viña Winery. Ronda
- 26 Descalzos Viejos Winery. Ronda
- 27 Doña Felisa Winery. Ronda
- 28 Bodega Excelencia. Ronda
- 29 Winery F. Schatz. Ronda
- 30 García Hidalgo Winery. Ronda
- 31 Winery Gonzalo Beltrán Finca La Nogalera. Ronda
- 32 Joaquín Fernández Winery. Ronda
- 33 Kieninger Winery. Ronda
- 34 La Melonera Winery. Ronda
- 35 Los Aguilares Winery. Ronda
- 36 Lunares-Los Bujeros Winery. Ronda
- 37 Morosanto Winery. Ronda
- 38 Viloria Winery. Ronda
- 39 Cortijo La Organic. Ronda

MUSEUMS AND INTERPRETATION CENTRES

- 40 Open Air Museum of Grape Must. Atajate
- 41 Chestnut House Museum. Pujerra
- 42 Integral Wine Centre "Serranía de Ronda". Ronda



Church of San Antonio de Padua (Alpendeire)



From Goyesca to Saddlery: tradition and customs

MUSEUMS AND INTERPRETATION CENTRES

- 43 House of Moors and Christians. Benalauría
- 44 Ethnographic Museum of Benalauría
- 45 Ethnographic Museum. Gaucín
- 46 Real Maestranza de Caballería de Ronda. Plaza and Museum. Ronda

LIVESTOCK AGROTOURISM

- 47 Reservatauro Ronda



Ronda Bullring-Palacio

Actively enjoying the Serranía

RECREATION AREAS

- 48 Conejeras Recreational Area. Parauta
- 49 Dehesa del Mercadillo Recreational Area. Ronda
- 50 Los Quejigales Recreational Area. Ronda

ACTIVITY CENTRES

- 51 Nautical Station and Canoeing Centre. Jimera de Libar
- 52 Speleology Interpretation Centre. Montejaque

AQUATIC AREAS

- 53 Charco Puente de San Juan. Algatocín
- 54 Charco Frío. Benaolán
- 55 Charco de la Cal. Igualeja
- 56 Charco Azul. Jubrique
- 57 Charco Redondo. Jubrique
- 58 Charco de Moción. Júzcar
- 59 Charco Azul de Castillejos. Ronda

ECOTOURISM

- 60 El Cortijo de la Algaba. Ronda



Cueva del Gato (Benaolán)

Unique landscapes and ecosystems

NATURAL FEATURES OF INTEREST

- 61 Paraje Natural los Reales de Sierra Bermeja. Genalguacil
- 62 Cueva del Gato Natural Monument. Benaolán
- 63 Cañón de las Buitreras Natural Monument. Cortes de la Frontera
- 64 Natural Monument at the source of the River Genal. Igualeja
- 65 Cueva del Hundidero Natural Monument. Montejaque
- 66 Pinsapo de las Escaleretas Natural Monument. Parauta
- 67 Tajo de Ronda Natural Monument
- 68 Riscos de Cartajima and Interpretation Centre

NATURE/NATIONAL PARK VISITOR CENTRES

- 69 Sierra de las Nieves National Park
- 70 Los Alcornocales Natural Park
- 71 Sierra de Grazalema Natural Park

NETWORK OF VIEWPOINTS OF THE SERRANÍA DE RONDA

- 72 Viewpoint of the Buitre Leonado. Benaolán
- 73 Viewpoint of África. Benarrabá
- 74 El Corcho viewpoint. Cortes de la Frontera
- 75 Viewpoint of La Guerra de la Independencia. Gaucín
- 76 Karst viewpoint. Montejaque
- 77 El Castañar viewpoint. Pujerra
- 78 Viewpoint of La Cabra Montés. Ronda
- 79 La Frontera Nazarí viewpoint. Ronda
- 80 El Pinsapo viewpoint. Ronda
- 81 Viewpoint of Los Viajeros Románticos. Ronda